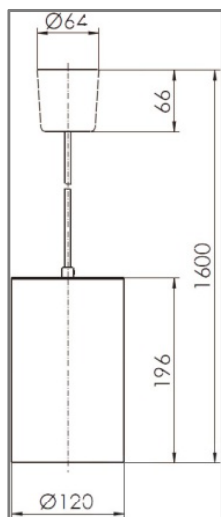


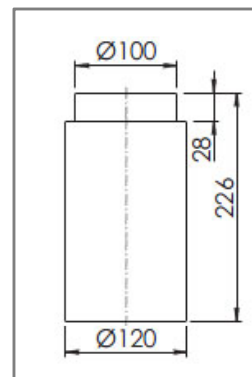


The pendant and / or ceiling luminaire **Flip** is impressive through its clarity of shape and arrangement of colour. The cylindrical luminaire unit made of PMMA with a satin finish combined with vivid colours emphasises the characteristic of this luminaire. Blue, red, yellow or opal, the luminaire adds an accent, regardless of whether it is above a counter, a table or serving as room, corridor and accent lighting. Flip is simply there.

## Dimensions



| Type              | Colour |
|-------------------|--------|
| Flip 140-E27 Opal | Opal   |
| Flip 140-E27 SBL  | Blue   |
| Flip 140-E27 SRT  | Red    |
| Flip 140-E27 ZKG  | Yellow |



| Type                | Colour |
|---------------------|--------|
| Flip-D 140-E27 Opal | Opal   |
| Flip-D 140-E27 SBL  | Blue   |
| Flip-D 140-E27 SRT  | Red    |
| Flip-D 140-E27 ZKG  | Yellow |



Photo: Dmitry Koksharov - Fotolia

Don't hesitate to contact our experts: Mónika Hosó (T: (06 1) 450 2701); István Hajdrik (T: (06 1) 450 2712); Balázs Lévai (T: (06 1) 450 2711); Miklós Bükkös (T: (06 1) 450 2714)